

Vintage Auto Appraisal

Cell# 631-346-7014

and

Office# 223-269-4723



*What's It
Worth?*

Carlisle PA by the Carlisle Fairgrounds & Nationwide

Carlisle Events - Appraisal Sponsor

www.vintageautoappraisal.com



1970 Plymouth Barracuda AAR

Appraised for: Cuda Owner

On: October 30th, 2025

Visit Our Website: [vintageautoappraisal.com](http://www.vintageautoappraisal.com)

Vintage Auto Appraisal

Cell# 631-346-7014

and

Office# 223-269-4723



What's It
Worth?

Carlisle PA by the Carlisle Fairgrounds & Nationwide

Carlisle Events - Appraisal Sponsor

www.vintageautoappraisal.com

Cuda Owner
Cuda Lane
Cudatown, USA

Date: 10/30/2025

Email: cuda@cuda

Subject: Pre-Purchase Appraisal 1970 Plymouth Barracuda AAR

Name: Cuda Owner

Enclosed please find your appraisal report of the subject vehicle a 1970 Plymouth Barracuda AAR The Vin Number for the subject vehicle is **BS23J0B274409** The Subject Vehicle was Appraised by **Vintage Auto Appraisal** Master Appraiser and Owner Johnny Baumann on 10/27/25 as per your request. The inspection and appraisal was performed to determine "Fair Market Value" Fair Market Value is determined from auction and private sales of similar vehicles. The **Vintage Auto Appraisal** scoring system is as follows

A=Superb/Mint-Show quality or trailered vehicle. No wear. As new. Not driven

B=Excellent-Quality restoration or original. Minimal wear. Limited driver

C=Very Good-Some wear or older restoration. Very good original. Street driven.

D=Good-Original showing proper wear for age. Amateur restoration.

E=Below-Average-More than allowable wear for age or miles. Rust or dents.

F=Poor-Parts or donor car. Frame or floor rust. Incomplete vehicle.

Body/Paint:	Engine & Frame:	Interior:	Options: Y or N		
Top: A	Painted: Y	Seats: A		P/S: N	Leather: N
Drivers: A	Engine: B	Panels: A		P/B: Y	NAV: N
Pass: A	Tires: A	Dash: A		P/L: N	Air Bag: N
Front: A	Wheels: A	Glass: A		P/Seat: N	Sunroof: N
Rear: A	Lights: A	Gauges: A		4x4: N	Rear A/C: N
Trim: A	Rust: N = A	Carpet: A		CD: N	Notes: Apox 8 year old paint and restoration still
Chrome: A	Suspsn: B	Orig?: N		DVD: N	excellent, True AAR, was green with green int.
Bondo or Body Work: N	Exhaust: B	Other:	Mileage	32,967	otherwise correct, some chrome trim dings
Summary: Superb High Quality Restoration	Other	Other	Correct?	NA	Subject Vehicles Average Condition Is "A"

Vintage Auto Appraisal

Cell# 631-346-7014

and

Office# 223-269-4723



What's It
Worth?

Carlisle PA by the Carlisle Fairgrounds & Nationwide

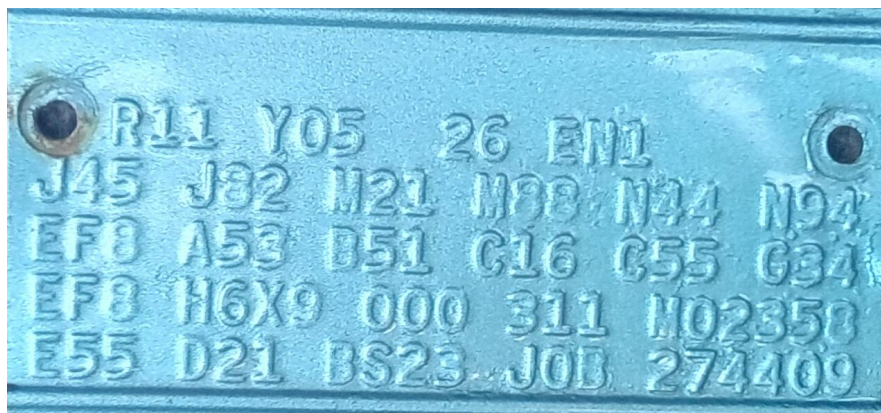
Carlisle Events - Appraisal Sponsor

www.vintageautoappraisal.com

Based on our research. Fair market value for this 1970 Plymouth Barracuda AAR with Vin Number BS23J0B274409 as based on the condition and fair market value of other vehicles sold in similar conditions and options is **SEE BELOW** ↓

Appraised Value \$ 87,500

Vin# and Data Plate Info For: BS23J0B274409		
Model:	B	= Plymouth Barracuda
Series:	S	= Special
Body:	23	= Two Door Hardtop
Engine:	J	= 340 V8, Six Pack
Year:	0	= 1970
Plant:	B	= Hamtrack, MI
Serial#:	274409	= Matches Vin# Tag, PA Registration and PA Title
Trim Tag:	Special Codes - A53 = Trans AM Package, J = 340 V8 Special Six Pack, EF8 - Paint = Ivy Green Metallic, Special "Trans AM" Tag included with vehicle Subject vehicle appears to be a True AAR painted incorrect color. SEE BELOW FOR TRIM TAG INFO.	





E-Bodies.org

Chrysler, Dodge & Plymouth are Registered Trademarks of FCR ID LLC

F-SERIES CHRYSLER FENDER TAG


1970 Fender Tag Decoder Report

All information contained is believed to be accurate and based on available documentation at the time of decoding. E-Bodies.org makes no guarantee nor is any warranty of authentication implied. This decoder is used for entertainment purpose only. E-Bodies.org has no affiliation with Chrysler, Dodge or Plymouth.

	R11	Y05	26	EN1																																																																																																																																																																																																																																																																																																																																																																																																																																																																																																																																																																																																																																																																																																																																																																																																																																																																																																																																																																																																																																																																																																																																																																																																																																																																																																																																																																																																																																																																																																			</
--	-----	-----	----	-----	--	--	--	--	--	--	--	--	--	--	--	--	--	--	--	--	--	--	--	--	--	--	--	--	--	--	--	--	--	--	--	--	--	--	--	--	--	--	--	--	--	--	--	--	--	--	--	--	--	--	--	--	--	--	--	--	--	--	--	--	--	--	--	--	--	--	--	--	--	--	--	--	--	--	--	--	--	--	--	--	--	--	--	--	--	--	--	--	--	--	--	--	--	--	--	--	--	--	--	--	--	--	--	--	--	--	--	--	--	--	--	--	--	--	--	--	--	--	--	--	--	--	--	--	--	--	--	--	--	--	--	--	--	--	--	--	--	--	--	--	--	--	--	--	--	--	--	--	--	--	--	--	--	--	--	--	--	--	--	--	--	--	--	--	--	--	--	--	--	--	--	--	--	--	--	--	--	--	--	--	--	--	--	--	--	--	--	--	--	--	--	--	--	--	--	--	--	--	--	--	--	--	--	--	--	--	--	--	--	--	--	--	--	--	--	--	--	--	--	--	--	--	--	--	--	--	--	--	--	--	--	--	--	--	--	--	--	--	--	--	--	--	--	--	--	--	--	--	--	--	--	--	--	--	--	--	--	--	--	--	--	--	--	--	--	--	--	--	--	--	--	--	--	--	--	--	--	--	--	--	--	--	--	--	--	--	--	--	--	--	--	--	--	--	--	--	--	--	--	--	--	--	--	--	--	--	--	--	--	--	--	--	--	--	--	--	--	--	--	--	--	--	--	--	--	--	--	--	--	--	--	--	--	--	--	--	--	--	--	--	--	--	--	--	--	--	--	--	--	--	--	--	--	--	--	--	--	--	--	--	--	--	--	--	--	--	--	--	--	--	--	--	--	--	--	--	--	--	--	--	--	--	--	--	--	--	--	--	--	--	--	--	--	--	--	--	--	--	--	--	--	--	--	--	--	--	--	--	--	--	--	--	--	--	--	--	--	--	--	--	--	--	--	--	--	--	--	--	--	--	--	--	--	--	--	--	--	--	--	--	--	--	--	--	--	--	--	--	--	--	--	--	--	--	--	--	--	--	--	--	--	--	--	--	--	--	--	--	--	--	--	--	--	--	--	--	--	--	--	--	--	--	--	--	--	--	--	--	--	--	--	--	--	--	--	--	--	--	--	--	--	--	--	--	--	--	--	--	--	--	--	--	--	--	--	--	--	--	--	--	--	--	--	--	--	--	--	--	--	--	--	--	--	--	--	--	--	--	--	--	--	--	--	--	--	--	--	--	--	--	--	--	--	--	--	--	--	--	--	--	--	--	--	--	--	--	--	--	--	--	--	--	--	--	--	--	--	--	--	--	--	--	--	--	--	--	--	--	--	--	--	--	--	--	--	--	--	--	--	--	--	--	--	--	--	--	--	--	--	--	--	--	--	--	--	--	--	--	--	--	--	--	--	--	--	--	--	--	--	--	--	--	--	--	--	--	--	--	--	--	--	--	--	--	--	--	--	--	--	--	--	--	--	--	--	--	--	--	--	--	--	--	--	--	--	--	--	--	--	--	--	--	--	--	--	--	--	--	--	--	--	--	--	--	--	--	--	--	--	--	--	--	--	--	--	--	--	--	--	--	--	--	--	--	--	--	--	--	--	--	--	--	--	--	--	--	--	--	--	--	--	--	--	--	--	--	--	--	--	--	--	--	--	--	--	--	--	--	--	--	--	--	--	--	--	--	--	--	--	--	--	--	--	--	--	--	--	--	--	--	--	--	--	--	--	--	--	--	--	--	--	--	--	--	--	--	--	--	--	--	--	--	--	--	--	--	--	--	--	--	--	--	--	--	--	--	--	--	--	--	--	--	--	--	--	--	--	--	--	--	--	--	--	--	--	--	--	--	--	--	--	--	--	--	--	--	--	--	--	--	--	--	--	--	--	--	--	--	--	--	--	--	--	--	--	--	--	--	--	--	--	--	--	--	--	--	--	--	--	--	--	--	--	--	--	--	--	--	--	--	--	--	--	--	--	--	--	--	--	--	--	--	--	--	--	--	--	--	--	--	--	--	--	--	--	--	--	--	--	--	--	--	--	--	--	--	--	--	--	--	--	--	--	--	--	--	--	--	--	--	--	--	--	--	--	--	--	--	--	--	--	--	--	--	--	--	--	--	--	--	--	--	--	--	--	--	--	--	--	--	--	--	--	--	--	--	--	--	--	--	--	--	--	--	--	--	--	--	--	--	--	--	--	--	--	--	--	--	--	--	--	--	--	--	--	--	--	--	--	--	--	--	--	--	--	--	--	--	--	--	--	--	--	--	--	--	--	--	--	--	--	--	--	--	--	--	--	--	--	--	--	--	--	--	--	--	--	--	--	--	--	--	--	--	--	--	--	--	--	--	--	--	--	--	--	--	--	--	--	--	--	--	--	--	--	--	--	--	--	--	--	--	--	--	--	--	--	--	--	--	--	--	--	--	--	--	--	--	--	--	--	--	--	--	--	--	--	--	--	--	--	--	--	--	--	--	--	--	--	--	--	--	--	--	--	--	--	--	--	--	--	--	--	--	--	--	--	--	--	--	--	--	--	--	--	--	--	--	--	--	--	--	--	--	--	--	--	--	--	--	--	--	--	--	--	--	--	--	--	--	--	--	--	--	--	--	--	--	--	--	--	--	--	--	--	--	--	--	--	--	--	--	--	--	--	--	--	--	--	--	--	--	--	--	--	--	--	--	--	--	--	--	--	--	--	--	--	--	--	--	--	--	--	--	--	--	--	--	--	--	--	--	--	--	--	--	--	--	--	--	--	--	--	--	--	--	--	--	--	--	--	--	--	--	--	--	--	--	--	--	--	--	--	--	--	--	--	--	--	--	--	--	--	--	--	--	--	--	--	--	--	--	--	--	--	--	--	--	--	--	--	--	--	--	--	--	--	--	--	--	--	--	--	--	--	--	--	--	--	--	--	--	--	--	--	--	--	--	--	--	--	--	--	--	--	--	--	--	--	--	--	--	--	--	--	--	--	--	--	--	--	--	--	--	--	--	--	--	--	--	--	--	--	--	--	--	--	--	--	--	--	--	--	--	--	--	--	--	--	--	--	--	--	--	--	--	--	--	--	--	--	--	--	--	--	--	--	--	--	--	--	--	--	--	--	--	--	--	--	--	--	--	--	--	--	--	--	--	--	--	--	--	--	--	--	--	--	--	--	--	--	--	--	--	--	--	--	--	--	--	--	--	--	--	--	--	--	--	--	--	--	--	--	--	--	--	--	--	--	--	--	--	--	--	--	--	--	--	--	--	--	--	----

- E55 - 340 V8 Single 4 Barrel Carburetor HP 275hp. If "A53" Package "T/A & AAR" 6 Pack Carbs HP 290hp (8 Cylinder)
- D21 - 4 Speed Manual Transmission Floor Shift (A833)
- B - Plymouth Barracuda
- S - Special Price Class
- 23 - 2 Door Hardtop
- J - 340 V8 "Six pack" Three 2 Barrel Carburetors High Performance (8 Cylinder)
- 0 - 1970 Model Year (F-Series)
- B - Hamtramck, MI
- 274409 - Sequential Number
- EF8 - "Dark Green Metallic" in Dodge / "Ivy Green Metallic" in Plymouth
- H - High Trim Grade
- 6 - Vinyl Bucket Seats
- X9 - Black (if H5/P5, cloth insert is Black & White)
- 000 - Full Door Panel
- 311 - Scheduled to be built March 1970 on the 11 day
- M02358 - Vehicle Order Number (VON)
- EF8 - Painted Top (no Vinyl Roof) "Dark Green Metallic" in Dodge / "Ivy Green Metallic" in Plymouth
- A53 - Trans Am package - T/A 340 Six Pack & AAR 340 Six Barrel only. Power Front Disc Brakes, 11" Rear Drums, 8 3/4 Axle w/ 3.55 Ratio (opt 3.91), Sure Grip, LH Remote Painted Racing Mirror, Hood Pins, Rear Spoiler, Side Exhaust, 26" Radiator w/ 7 Blade Torque Fan, Fiberglass Hood w/ Fresh Air, Rear Radio Antenna when Radio ordered, Rallye Suspension, Front & Rear Sway Bars, Black Trans Am Stripe, Collapsible Spare and E60 & G60x15" Ployglas Tires
- B51 - Power Brakes
- C16 - Console w/ Woodgrain (and Seat Belt holder in the back of the console)
- C55 - Bucket Seats





Chrysler, Dodge & Plymouth are Registered Trademarks of FCB US LLC

F-SERIES CHRYSLER FENDER TAG

1970 Fender Tag Decoder Report

All information contained is believed to be accurate and based on available documentation at the time of decoding. E-Bodies.org makes no guarantee nor is any warranty of authentication implied. This decoder is used for entertainment purpose only. E-Bodies.org has no affiliation with Chrysler, Dodge or Plymouth.

Roof, Convertible or Vinyl Top Color

Trim

Paint Color

R11 Y05 26 EN1

J45 J82 M21 M88 N44 N94

EF8 A53 B51 C16 C55 G34

EF8 H6X9 000 311 M02358

E55 D21 BS23 JOB 274409

Sale Codes (Options)

Scheduled Production Date

Vehicle Order Number

Engine Code

Car Line

Body Type

Model Year

Serial Number

Transmission

Price Class

Upper Door

Engine

Assembly Plant

G34 - Painted Driver Side Racing Mirror (Left) Remote Adjusting

J45 - Hood Tie Down Pins

J82 - Rear Spoiler (Duck Tail)

M21 - Drip Rail Moldings

M88 - Deck Molding Treatment (Tail Light Panel Molding)

N44 - Side Exhaust


N94 - Fiberglass Hood - Carb Fresh Air Package

R11 - 2 Watt AM Radio (Music Master)

Y05 - Build for USA Order


26 - 26" Radiator

EN1 - End of Sales Codes on Fender Tag (Vehicle Assembled on production line #1)



Page 2 of 2

DECODED on October 28, 2025 by E-Bodies.org. Decode SN YJ28362138-24



Terms and Conditions: This appraisal is based upon matters which are apparent to the appraiser from a visual inspection and unless otherwise stated, hereby certifies that we have this day carefully examined the above described vehicle. This appraisal is made with the understanding that the appraiser assumes no liability with respect to any action that may be taken on the basis of this appraisal and does not include matters which might become apparent from the disassembling of parts or from the repeated use of this vehicle. The accompanying photographs are an integral part of this appraisal.

Note: Appraisals and Fees reflect the agreed upon fee for the appraisal inspection and report. Additional fees will be incurred for appraisal updates, contact with legal counsel, special forms, special paperwork and additional shipping or mailing.

See Below For Your **Vintage Auto Appraisal** “Photo Gallery”



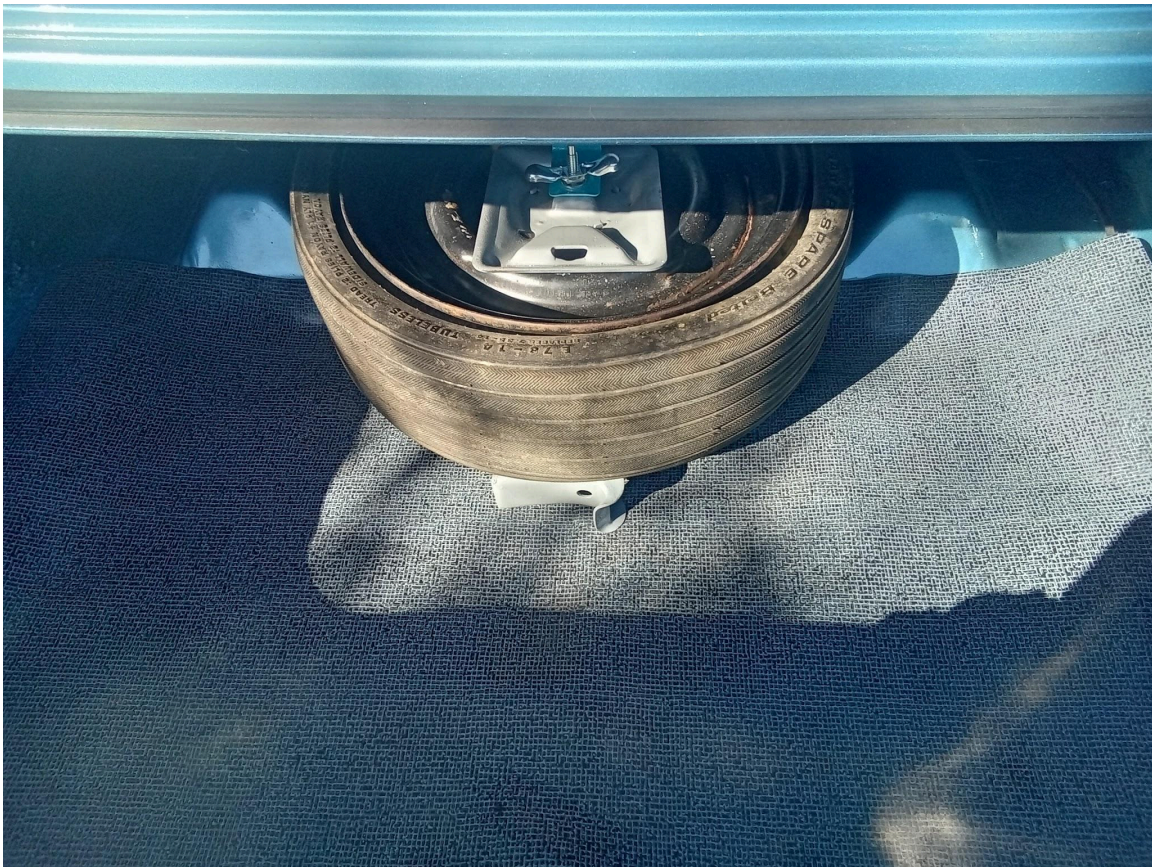






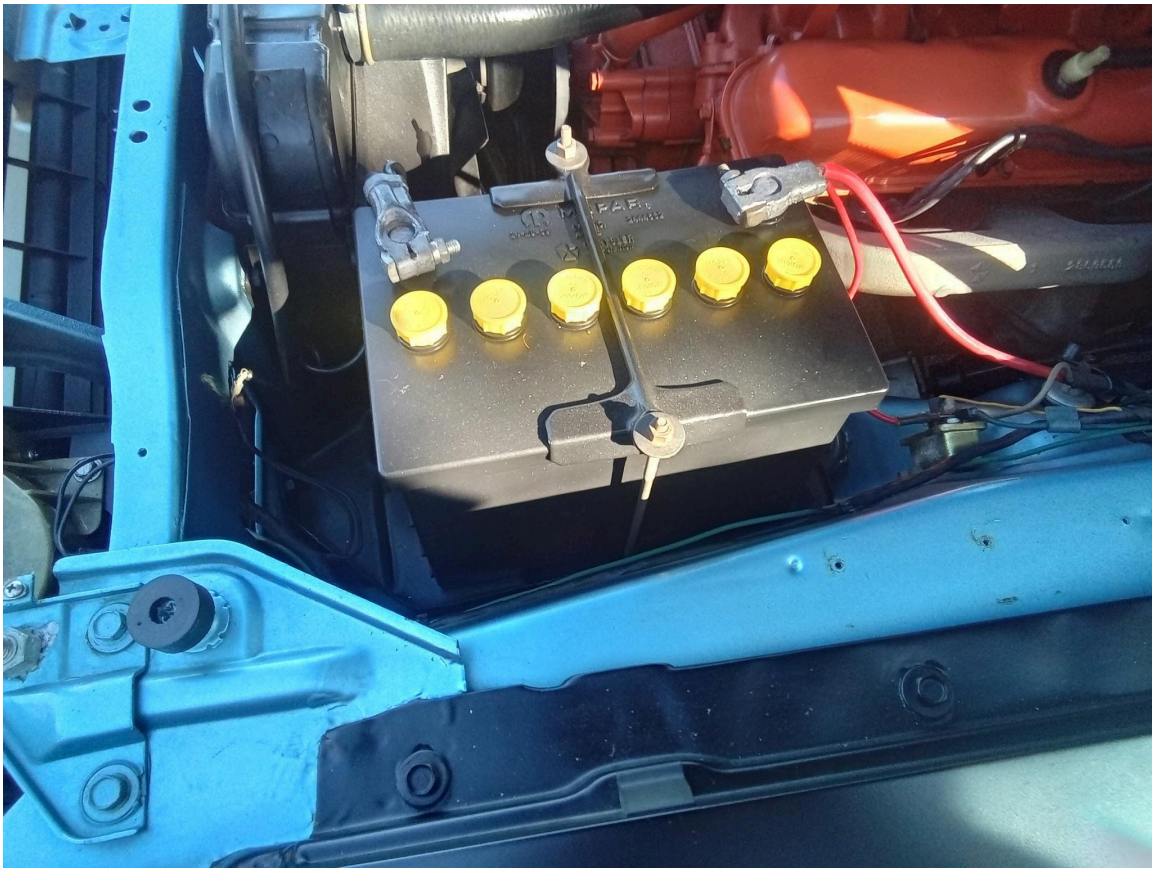










































About Vintage Auto Appraisal

Welcome to Vintage Auto Appraisal. My name is Johnny Baumann and I'm the owner and Master Appraiser for Vintage Auto Appraisal. I have been an avid car crazed nut since age 13. I had my first car crush when my Dad's friend pulled into our driveway with a shiny new Java Green 1974 Triumph TR6. From that moment on I was hooked. I purchased my first classic car at age 15, a 1948 Chevrolet Fleetmaster Convertible. Since then I have owned, sold, suffered and romanced over 160 cars, and I haven't looked back. I always tell people it's not the cars or trucks it's the stories and people behind them. I love all kinds of cars, but I lean more towards classics from the 30's and 40's, Triumphs, Old Crusty VW's and Benz's. However, I enjoy all kinds of vehicles of various years. I have spent 42 years in the Auto Parts Industry but also spent 25 plus years as a classic car appraiser in Port Jefferson Long Island, New York, Nationwide and in Carlisle Pa. (home of the famous Carlisle Fairgrounds) where we are a long time vendor.



During my time as an appraiser I traveled across the U.S. appraising wonderful cars and meeting incredible people. I spent time working as one of the Head Appraisers on the "Harold Le May" collection, one of the world's largest collections with 3,100 plus classic vehicles. In addition I have also worked on the Lincoln Highway 75th anniversary tour and had the honor to do the first leg across the U.S. as well as going to 100's of collectible car auctions. On the weekends you can find me working an Ole Rusty VW Bug, Triumph, 1930's-1940's Junk or some other Relic

Through it all I still say "It's always about the people and the stories along the way". So the main purpose of Vintage Auto Appraisal is to supply you with a high quality appraisal at the best price. We understand at Vintage Auto Appraisal that you need appraisal work for many reasons. We also understand that our old relics in most cases are a labor of love. Almost every vintage vehicle has a story to tell and we want to hear that story. At Vintage Auto Appraisal we always say it's "About great old cars, the people and the stories along life's highway". You are invited to contact Vintage Auto Appraisal anytime for your vehicle value and appraisal questions and needs... *Thank you from Johnny B*



Background, certifications and qualifications for Johnny Baumann and Vintage Auto Appraisal

..Over 42 years experience in the auto parts and service industry. Specialist in European vehicles and Weber Carburetors. Expert in automotive parts and operating systems.

..ASE-Automotive Service Excellence certified in automotive parts and operating systems. New York State ID#KS7JVOQM5BAUM

..Pennsylvania Appraisers Assc # 108022BAUM

..Owned, romanced, suffered and restored over 175 collectible vehicles

..Expert in antique and classic vehicle history

..Member AACA-Antique Automobile Club of America

..Member Long Island Triumph Association

..Member National Packard Club

..Member Mercedes Benz Club of America

..Member Lincoln Highway Association

..Former Certified agent for AAG-Auto Appraisal Group as vehicle value expert and vehicle appraiser

..Former Co-Head agent and information gatherer for the world famous Harold Le May estate. Featuring over 3100 collectible vehicles

..Former Co-Head agent and information gatherer for The Lane Auto Museum collection

..Proved Data and Value information for Carlisle Events Giveaway cars 1998-2005

..Carlisle Events and Car Show vendor and sponsor since 1988

..Logged over 1500 hours in gathering Diminished Value data at nationwide vehicle auctions. This data used in class action lawsuits against major insurance companies

..Co-chaired over many value seminars at nationwide events such as Carlisle Events, Barrett Jackson auctions and AACA national conference

..Creator and author of Vintage Auto Appraisal Magazine with over 2400 readers per month

Other references available upon request

Read Vintage Auto Appraisal Magazine [CLICK HERE](#)



"We Drive Our Cars Because They Make Us Free"...David E Davis